

NORTON

ToolTalk

EQUIPMENT WORTH TALKING ABOUT

JANUARY / FEBRUARY 2008

WELCOME TO TOOL TALK

Greetings everyone and welcome to the first edition of *Tool Talk*, a bi-monthly, electronic only, newsletter dedicated to

equipment. Not only will we be highlighting the Norton line, we'll also be covering a wide array of topics relating to equipment, featuring applications, techniques, servicing equipment, product

improvements, parts, warranties, selling tips, as well as this month's edition on safety. It's a quick and simple educational read and we believe you will find it helpful down the road. This is also a great way to keep our customers informed, so feel free to pass it along.



Mark Pendergrass,
Market Manager for
Construction Products

Safety is the key to success in any industry and it is also the top priority for Norton. With the stress of meeting job deadlines and trying to lower cost, oftentimes safety is ignored on job sites. It is our responsibility as a manufacturer to ensure that the equipment, and the consumables that go on them, are in safe working order. We should always be finding solutions to help the customer not only save money, but possibly a life.

In the Norton lineup, we have several walk-behind concrete saws to meet most every application in the rental industry. Pictured on the right are a couple that can be found in our color catalog.

As I mentioned earlier, this first edition is all about safety. Our Equipment Business Manager, Lyndon Haas, will talk about "walk-behind concrete saw safety."



61HP Turbo
Diesel (C6120)



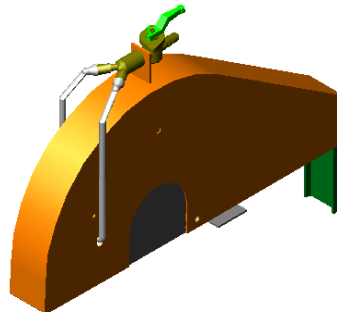
13HP Push
Premium
(C13P18)

WALK-BEHIND CONCRETE SAW SAFETY CHECKLIST ✓

It's important that the overall safety condition of a walk-behind saw is checked before operating. The checklist below, as well as any maintenance and safety information provided by the manufacturer, should be used. The inspection should be done before the saw is started and running.

1. Blade Guard

Make sure the blade guard is present and intact. The guard should be firmly attached to the saw. Operating a saw without a guard or partial blade guard is dangerous and should never be done.



Lyndon Haas, Equipment
Business Manager

continued on next page

WALK-BEHIND CONCRETE SAW SAFETY CHECKLIST

continued from previous page

2. Blade Shaft Collars

Check for wear, proper size and condition. The proper size collar is necessary to support the blade. Replace the collar if it is worn or damaged. The surfaces that contact the blade must be clean, smooth and flat.

3. Blade Shaft and Bearings

Check for a tight fit of the shaft in the bearings. There should be no shifting or play of the shaft in the bearings. Always check for wear on the shaft, especially where the blade mounts on the saw. Replace the shaft or bearings if there is excessive wear.

4. Wheels

Check for excessive or uneven wear. Worn wheels can cause the blade to jam in the cut, causing a potential safety hazard.

5. Personal Protective Equipment

Safety protection is required for both indoor and outdoor walk-behind concrete cutting. Operators should always use the noted OSHA-approved safety protection:

- a. Safety glasses
- b. Hearing protection
- c. Hard hat
- d. Respiratory protection
- e. Steel-toed work shoes/boots
- f. Hi-visibility safety vest



Always inspect the diamond blade periodically during use for core flatness, fatigue cracks, segment damage, undercutting and damage to the arbor hole.

Job site requirements should be fully understood and followed. Common requirements to address before beginning the sawing operation are:

- Required traffic flow, including DOT/DOH requirements
- Water accessibility
- Clearly marked, non-sawing areas (i.e. gas lines, water and electrical)
- Materials to be cut (for correct blade selection)
- Material removal
- Proper loading and unloading of the equipment or ramps for the saw
- Proper ventilation on indoor jobs
- Never use gas or diesel engines indoors unless proper ventilation is available
- Verify that the operator is aware of operating and safety procedures as stated in the owner's manual

Using the checklist and guidelines above, along with the manufacturer's operating and maintenance procedures, will help promote an understanding of safety and awareness when using a walk-behind concrete saw.



For more information on Norton Clipper walk-behind concrete saws, masonry and tile saws, visit our website at www.nortonclipper.com.

COMMENTS?

If you have comments or ideas for a new article, please contact Mark:
Mark. S.Pendergrass@Saint-Gobain.com